

BSA: A TYPE-ANGULAR MOUNTING

ROUGH BORING BARS

Fig 1

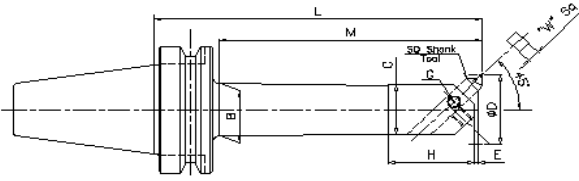


Fig 2

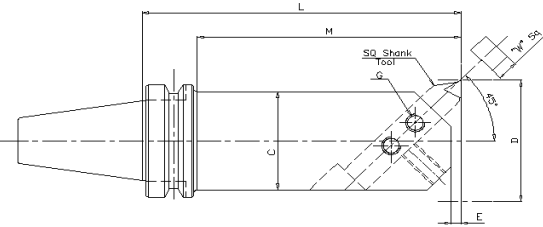
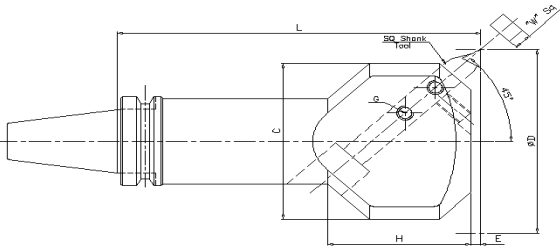


Fig 3



DIMENSIONS IN mm

FIG	DESIGNATION	ØD		L	M	G	W' Sq.	ØC	ØB	H	E	APPROX. WEIGHT (kg)							
		MIN.	MAX																
1	BT 40-BSA25 - 135	25	38	135	105	M6	8	20	22	35	1.0	1.5							
	BT 40-BSA30 - 150	30	42	150	120			24	26	40	1.6								
	BT 40-BSA38 - 165	38	52	165	135	M8	10	30	33	50	2.6	2.0							
	BT 40-BSA50 - 165	50	65	165	135	M10	12	40	44	65	3.0	2.5							
	BT 40-BSA50 - 210			210	180														
2	BT 40-BSA62 - 165	62	90	165	135								16	50	-	-	-	2.0	3.0
1	BT 40-BSA62 - 225			225	195										56	80	4.5		
2	BT 40-BSA72 - 165	72	110	165	-										60	-	-	-	2.4
	BT 40-BSA72 - 225			225	5.5														
3	BT 40-BSA90 - 165	90	125	165	-	75	-	60	4.0	4.5									
	BT 40-BSA90 - 210			210	5.5														

CONT.....NEXT PAGE

BSA: 'A' TYPE ANGULAR MOUNTING

 DIMENSION IN mm

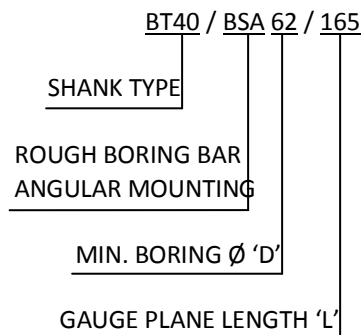
FIG	DESIGNATION	ØD		L	M	G	W' Sq.	ØC	ØB	H	E	APPROX. WEIGHT (kg)
		MIN.	MAX									
1	BT 45-BSA25-135	25	38	135	95	M6	8	20	22	35	1.0	2.4
	BT 45-BSA30-165	30	42	165	125			24	26	40	1.6	2.6
	BT 45-BSA38-180	38	52	180	140	M8	10	30	33	50	2.6	3.0
	BT 45-BSA42-210	42	56	210	170			34	37	60	2.0	3.4
	BT 45-BSA50-180	50	65	180	140	M10	12	40	44	65	3.0	3.6
	BT 45-BSA50-225			225	185							4.1
	BT 45-BSA62-195	62	90	195	155	M10	16	50	56	80	2.0	4.7
	BT 45-BSA62-270			270	230							6.0
	BT 45-BSA72-195	72	110	195	155	M10	16	60	66	95	2.4	5.8
	BT 45-BSA72-285			285	245							8.0
2	BT 45-BSA90-195	90	125	195	160	M12	16	75	-	-	4.0	7.6
1	BT 45-BSA90-285			285	250				80	110	5.1	
1	BT 50-BSA25-135	25	38	135	92	M6	8	20	22	35	1.0	4.2
	BT 50-BSA30-165	30	42	165	122			24	26	40	1.6	4.4
	BT 50-BSA38-180	38	52	180	137	M8	10	30	33	50	2.6	4.8
	BT 50-BSA42-210	42	56	210	167			34	37	60	2.0	5.0
	BT 50-BSA50-180	50	65	180	137	M10	12	40	44	65	3.0	5.4
	BT 50-BSA50-240			240	197							5.7
	BT 50-BSA62-195	62	90	195	152	M10	16	50	56	80	2.0	6.2
	BT 50-BSA62-270			270	227							7.6
	BT 50-BSA72-195	72	110	195	152	M10	16	60	66	95	2.4	7.0
	BT 50-BSA72-285			285	242							9.3
2	BT 50-BSA90-210	90	125	210	167	M12	20	75	80	110	4.0	9.2
1	BT 50-BSA90-300			300	257							12.3
3	BT 50-BSA105-195	105	160	195	-	M12	25	90	-	-	3.0	10.7
	BT 50-BSA105-285			285	-				94	130		15.0
	BT 50-BSA130-255	130	190	255	-	M12	25	110	-	85	6.0	14.5

NOTE:

- L, M AND E CORRESPOND TO ØD MIN.
- BORING BARS WITH OTHER TYPES OF SHANK LIKE SK, TC CT, ISO ARE OFFERED ON CUSTOMER REQUEST. OTHER DETAILS REMAIN THE SAME
- DRIVE SLOT AND TOOL ARE IN SAME PLANE.
- BORING BAR IS SUPPLIED WITHOUT TOOL.
- ROUGH BORING BARS, B TYPE FOR SQUARE MOUNTING ARE AVAILABLE ON REQUEST.

TOOLS ARE OFFERED AS OPTIONAL

ORDERING INSTRUCTION



BCA: A TYPE-ANGULAR MOUNTING

MICROBORE BORING BARS

Fig 1

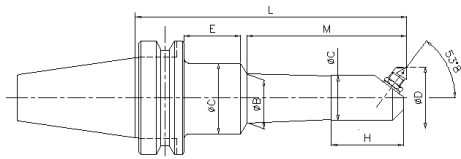


Fig 2

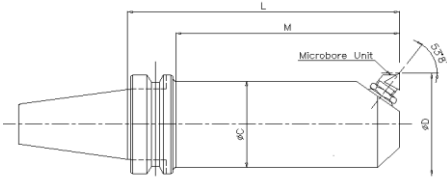
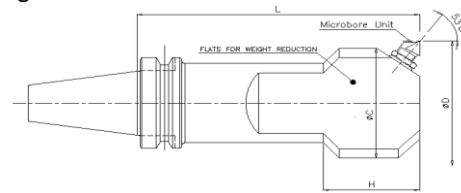


Fig 3



 DIMENSIONS IN mm

FIG	DESIGNATION	ØD		L	E	M	H	ØC	B	MICROBORE UNIT (CARTRIDGE AND INSERT)	APPROX. WEIGHT (kg.)
		MIN.	MAX.								
1	BT 40-BCA 13.5-105	13.5	16.0	105	8	67	15	44	13	M1B2F40 (BRAZED CARBIDE TIP)	1.5
	BT 40-BCA 13.5-165			165	68						2.0
	BT 40-BCA 14.5-105	14.5	17.0	105	8	14	1.5				
	BT 40-BCA 14.5-165			165	68	2.0					
	BT 40-BCA 16-105	16.0	22.5	105	2	73	18		M1A2F40 (BRAZED 'C' TIP)	1.5	
	BT 40-BCA 16-180			180	77				2.0		
	BT 40-BCA 19-120	19.0	23.0	120	4	86	23		M2B2 (CCGT04T004)	1.5	
	BT 40-BCA 19-180			180	64				2.0		
	BT 40-BCA 23-135	23.0	29.0	135	-	105	24		M3B2 (TCMT 06T104 CCMT060204)	1.5	
	BT 40-BCA 23-195			195	60				2.0		
	BT 40-BCA 29-150	29.0	41.0	150	5	115	30		M3A2 (TCMT 110204 CCMT060204)	1.5	
	BT 40-BCA 29-195			195	50				2.0		
	BT 40-BCA 38-150	38.0	49.0	150	5	172	41		M5B2 (TCMT 110204 CCMT060204)	2.0	
	BT 40-BCA 38-210			210	8					2.5	
BT 40-BCA 46-150	46.0	66.0	150	5	115	45	M5A2 (TCMT 110204 CCMT060204)	2.5			
BT 40-BCA 46-225			225	13				3.0			
2	BT 40-BCA 62-165	62.0	87.0	165	-	135	-	51	-	M7A2 (TCMT 160408 CCMT090304)	3.5
1	BT 40-BCA 62-225			225	11	184	60	62	57		4.5
2	BT 40-BCA 83-120	83.0	108.0	120	-	-	-	63	-		3.5
	BT 40-BCA 83-165			165	-	-	-	-	4.5		
BT 40-BCA 83-225	225			-	-	-	-	6.0			
3	BT 40-BCA 98-165	98.0	142.0	165	-	-	90	83	-	M10A2 (TCMT 160408 CCMT090304)	6.0

CONT.....NEXT PAGE

MICROBORE BORING BARS

BCA: A TYPE-ANGULAR MOUNTING

DIMENSIONS IN mm

FIG	DESIGNATION	ØD		L	E	M	H	ØC	B	MICROBORE UNIT (CARTRIDGE AND INSERT)	APPROX. WEIGHT (kg.)	
		MIN.	MAX									
1	BT 45-BCA 13.5-105	13.5	16.0	105	17	50	15	44	13	M1B2F40 (BRAZED CARBIDE TIP)	2.4	
	BT 45-BCA 13.5-195			195	107						3.5	
	BT 45-BCA 14.5-105	14.5	17.0	105	15	52	18				14	2.4
	BT 45-BCA 14.5-195			195	105							3.4
	BT 45-BCA 16-120	16	22.5	120	24	58	23		15	M1A2F40 BRAZED 'CT'	2.5	
	BT 45-BCA 16-195			195	99						3.4	
	BT 45-BCA 19-135	19	23.0	135	29	68	24		18	M2B2 CCMT060204	2.6	
	BT 45-BCA 19-195			195	89						3.3	
	BT 45-BCA 23-150	23	29.0	150	30	82	30		22	M3B2 (TCMT 06 T1 04 CCMT 060204)	2.7	
	BT 45-BCA 23-210			210	90						3.4	
	BT 45-BCA 29-165	29	41.0	165	12	115	41		28	M3A2 (TCMT 06 T104 CCMT 060204)	2.8	
	BT 45-BCA 29-225			225	72						3.5	
	BT 45-BCA 38-165	38	49.0	165	12	172	55		35	M5B2 (TCMT 11 02 04 CCMT 060204)	3.2	
	BT 45-BCA 38-210			210	-						3.4	
	BT 45-BCA 46-165	46	66.0	165	12	115	45		55	41	M5B2 (TCMT 11 02 04 CCMT 060204)	3.2
	BT 45-BCA 46-225			225	5							4.1
BT 45-BCA 46-225	255			11	4.4							
2	BT 45-BCA 62-165	62	87.0	165	-	127	-	51	-	M7A2 (TCMT 16 04 08 CCMT 060204)	4.2	
1	BT 45-BCA 62-240			225	18	184	-	70	57		6.0	
1	BT 45-BCA 62-330			255	12	80	60	59	7.7			
2	BT 45-BCA 83-165	83	108.0	165	-	127	-	63	-	M10A2 (TCMT 16 04 08 CCMT 090304)	5.4	
1	BT 45-BCA 83-240			240	-	202	70	70	7.6			
2	BT 45-BCA 98-165	98	142.0	240	-	127	-	83	-	M10A2 (TCMT 16 04 08 CCMT 090304)	7.7	
	BT 45-BCA 98-240			165	-	202	-				10.8	
1	BT 50-BCA 13.5-120	13.5	16.0	120	10	67	15	44	13	M1B2F40 (TCMT 16 04 08 CCMT 090304)	4.0	
	BT 50-BCA 13.5-195			195	85						5.0	
	BT 50-BCA 14.5-120	14.5	17.0	120	10	73	18				14	4.0
	BT 50-BCA 14.5-195			195	85							5.0
	BT 50-BCA 16-120	16	22.5	120	4	86	23		15	M1A2F40 BRAZED 'CT'	4.0	
	BT 50-BCA 16-195			195	79						5.0	
	BT 50-BCA 19-135	19	23.0	135	6	105	30		18	M2B2 CCMT060204	4.0	
	BT 50-BCA 19-210			210	81						5.0	
	BT 50-BCA 23-150	23	29.0	150	2	115	41		22	M3B2 (TCMT 06 T104 CCMT 060204)	4.0	
	BT 50-BCA 23-225			225	77						5.0	
	BT 50-BCA 29-165	29	41.0	165	7	172	55		28	M3A2 (TCMT 06 T1 04 CCMT 060204)	4.5	
	BT 50-BCA 29-225			255	67						5.5	
	BT 50-BCA 38-165	38	49.0	165	7	206	45		55	35	M5B2 (TCMT 11 02 04 CCMT 060204)	4.5
	BT 50-BCA 38-225			255	10							5.0
	BT 50-BCA 46-165	46	66.0	165	7	115	44		55	41	M5A2 (TCMT 11 02 04 CCMT 060204)	5.0
	BT 50-BCA 46-225			255	6							6.0

CONT.....NEXT PAGE

BCA: A TYPE-ANGULAR MOUNTING

MICROBORE BORING BARS

 DIMENSIONS IN mm

FIG	DESIGNATION	ØD		L	E	M	H	ØC	B	MICROBORE UNIT (CARTRIDGE AND INSERT)	APPROX. WEIGHT (kg.)
		MIN.	MAX.								
2	BT 50-BCA 62-180	62.0	87.0	180	-	137	-	51	-	M7A2 (TCMT 16 04 08) CCMT090304	6.0
1	BT 50-BCA 62-240			240	13	184	60	70	57		7.0
	BT 50-BCA 62-330			330	7	280			59		8.5
2	BT 50-BCA 83-165	83.0	108.0	165	-	122	-	63	-		6.5
1	BT 50-BCA 83-240			240	7	170	70	90	70		9.0
	BT 50-BCA 83-345			345	-	302		-	76		12.0
2	BT 50-BCA 98-165	98.0	142	165	-	122	-	83	-	M10A2 (TCMT 16 04 08) CCMT090304	8.5
1	BT 50-BCA 98-240			240		197					11.5
	BT 50-BCA 98-345			345		302					85
3	BT 50-BCA 132-210	132.0	176	210	-	-	65	108	-		12.0
	BT 50-BCA 132-315			315							18.5
	BT 50-BCA 166-225	166.0	210	225	-	-	70	142	-		13.0
	BT 50-BCA 166-315			315						18.5	
	BT 50-BCA 200-210			200.0						244	210

*GRADUATION ON COLLAR: 1 DIV=0.020mm ON DIA

NOTE:

- DETAILS GIVEN ABOVE ARE FOR BORING BARS WITH BT SHANK ONLY.
- BORING BARS WITH OTHER TYPES OF SHANK LIKE TC, CT, ISO ARE OFFERED ON CUSTOMER REQUEST. OTHER DETAILS REMAIN THE SAME DRIVE SLOT AND TOOL ARE IN SAME PLANE.
- BORING BAR IS SUPPLIED WITHOUT MICROBORE UNIT.
- L & M CORRESPOND TO ØD MIN. MICROBORING BARS, B TYPE – FOR SQUARE MOUNTING ARE AVAILABLE ON REQUEST.
- **PREFERED INSERTS TYPES IS “TCMT”**

ORDERING INSTRUCTION

