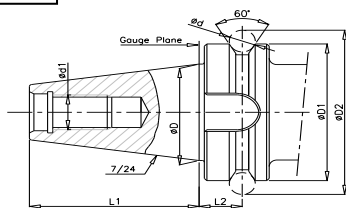


SHANK TYPES

BT

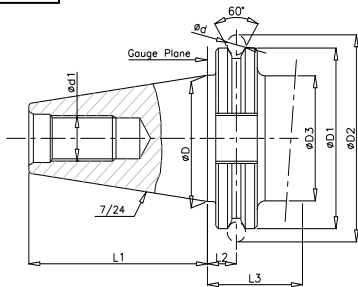


MAS 403

DIMENSION IN mm

TAPER SIZE	Ø D	Ø D1h8	Ø D2 ^{+0.05}	Ø d1 6H	MEASURING PIN Ød	L1 ^{+0.2}	L2 ^{+0.1}
BT 30	31.75	46	56.144	M12	8	48.4	13.6
BT 40	44.5	63	75.679	M16	10	65.4	16.6
BT 45	57.15	85	100.216	M20	12	82.8	21.2
BT 50	69.85	100	119.020	M24	15	101.8	23.2

TC



DIN 69871

ISO 7388

DIMENSIONS IN mm

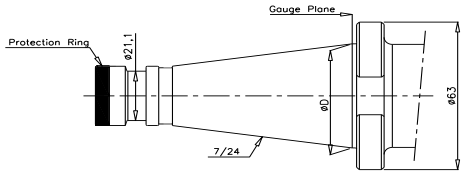
- **DIN 69871-FORM 'A'**
(Without Coolant Holes Through Flange)
- **DIN 69871-FORM 'B'**
(With Coolant Holes through Flange)

TAPER SIZE	Ø D	Ø D1 ^{-0.1}	Ø D2 ^{+0.05}	Ø D3 Max	MEASURING PIN Ød	L1 ^{-0.3}	L2 ^{+0.1}	L3 Min
TC 30	31.75	50	59.3	45	7	47.8	11.1	35
TC 40	44.5	63.55	72.3	50	7	68.4	11.1	35
TC 45	57.15	82.55	91.35	63	7	82.7	11.1	35
TC 50	69.85	97.5	107.3	80	7	101.8	11.1	35

ISO 40 (for CNC Machine)

ISO (for Conventional Machines)

DIN 2080



DIMENSION IN mm

THESE ARE SUITABLE FOR CONVENTIONAL AND CNC MILLING MACHINE WITH DRAW BAR.

TAPER SIZE	Ø D	Ø D1	Ø d1	L1	L2	L3
ISO 30	31.75	50.0	M12	8.0	9.6	68.4
ISO 40	44.45	63.0	M16	10.0	11.6	93.4
ISO 50	69.85	97.5	M24	12.0	15.2	126.8

