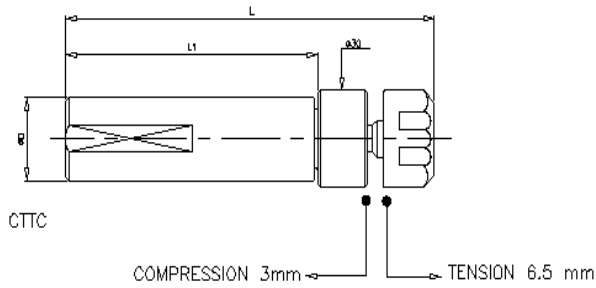


TAPPING COLLET CHUCKS

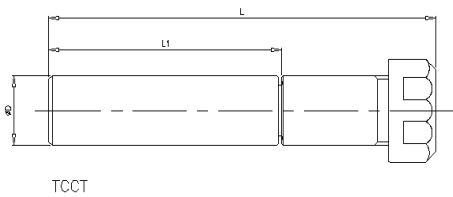
TCCT / CTTC

FIG - 1



COMPRESSION & TENSION TAPPING CHUCK (CTTC)

FIG - 2



TAPPING COLLET CHUCK TENSION (TCCT)

DIMENSIONS IN mm DIMENSIONS IN INCH

DESIGNATION	SUITABLE FOR COLLET	COLLET CLAMPING CAPACITY (DIA) mm	D		L1		L		NUT DESIGNATION	SPANNER DESIGNATION	FIG REF
			mm	inch	mm	inch	mm	inch			
CTTC 22/ER16/100	ER16*	1-10	22	0.866	100	3.94	151	5.95	UM/ER16	GS25	1
TCCT 22/ER16/100	ER16	1-10	22	0.866	100	3.94	135	5.31	UM/ER16	GS25	2
TCCT 3/4"/ER16M/68	ER16	1-10	19.05	0.75	68	2.68	103	4.10	UM/ER16M	E16M	2
TCCT 3/4"/ER11M/68	ER11	1-7	19.05	0.75	68	2.68	96	3.78	UM/ER11M	E11M	2

NOTE:

- TAPPING COLLET CHUCKS WITH OTHER TYPES OF SHANKS ARE ALSO AVAILABLE ON REQUEST.
- **PLACE SEPARATE ORDER FOR SPANNERS. (Refer page No. 59)**
- COMPRESSION & TENSION ENSURE BETTER THREAD FORM AND ACCURACY ON JOB.
- SUITABLE ONLY TO CNC MACHINES AND OTHER MACHINES HAVING AUTO REVERSING FACILITY.
- SPECIALLY DEVELOPED **TAPPING COLLETS** FOR HOLDING.

