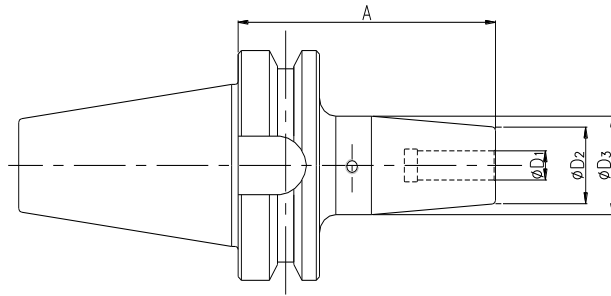


BT – SHANK (METRIC SIZES)

SHRINK FIT HOLDERS – BT SHANK



DIMENSIONS IN mm

DESIGNATION	ø d1	ø D2	ø D3	A
BT40/SF6/90	6	21	31	90
BT40/SF6/160	6	21	31	160
BT40/SF8/90	8	21	31	90
BT40/SF8/160	8	21	31	160
BT40/SF10/90	10	24	34	90
BT40/SF10/160	10	24	34	160
BT40/SF12/90	12	24	34	90
BT40/SF12/160	12	24	34	160
BT40/SF16/90	16	27	37	90
BT40/SF16/160	16	27	37	160
BT40/SF20/90	20	33	43	90
BT40/SF20/160	20	33	43	160
BT40/SF25/100	25	44	50	100
BT40/SF25/160	25	44	50	160

NOTE:

- THESE HOLDERS ARE SUITABLE FOR SOLID CARBIDE PARALLEL SHANK WITH H6 TOLERANCE
- ALL SHRINK FIT HOLDERS ARE BALANCED TO G 2.5 AT 1800 RPM.
- TOOL HOLDERS WITH SHANKS OF OTHER TYPES AND SIZES ARE AVAILABLE ON REQUEST.

ORDERING INSTRUCTION

