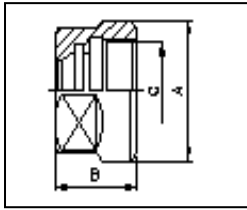


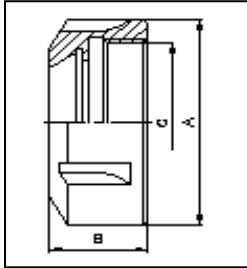
DIMENSIONS IN mm

 DIMENSIONS IN INCH



HEXAGONAL NUTS FOR ER COLLET CHUCKS (DIN 6499)

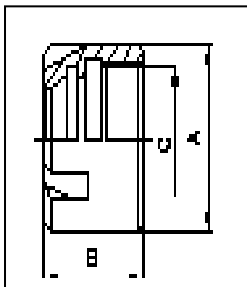
DESIGNATION	A	B	C	SPANNER TO BE USED
UM/ER11	19.0	11.3	M14x0.75	GS 17
UM/ER16	28.0	17.5	M22x1.50	GS 25
UM/ER20	34.0	19.0	M25x1.50	GS 30



SLOTTED NUTS FOR ER COLLET CHUCKS (DIN 6499)

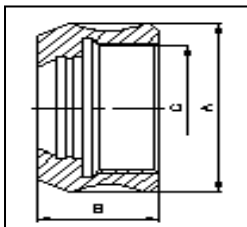
DESIGNATION	A	B	C	SPANNER TO BE USED
UM/ER25	42.0	20.0	M32x1.50	E - 25
UM/ER32	50.0	22.5	M40x1.50	E - 32
UM/ER40	63.0	25.5	M50x1.50	E - 40
UM/ER50*	78.0	35.5	M64x2.00	E - 50

*NOT COVERED UNDER DIN STANDARD



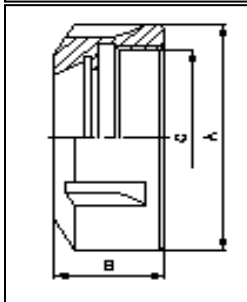
MINI NUTS FOR ER COLLET CHUCKS

DESIGNATION	A	B	C	SPANNER TO BE USED
UM/ER 8M	12.0	12.0	M10x0.75	E - 8M
UM/ER 11M	16.0	12.0	M13x0.75	E - 11M
UM/ER 16M	22.0	17.5	M19x1.00	E - 16M
UM/ER 20M	28.0	19.0	M24x1.00	E - 20M
UM/ER 25M	35.0	20.0	M30x1.00	E - 25M



SLOTTED NUTS FOR ERO COLLET CHUCKS

DESIGNATION	A	B	C	SPANNER TO BE USED
UM/ERO25	43	24.0	M33x1.5	E - 25
UM/ERO35	60	30.0	M48x2.0	E - 40
UM/ERO44	72	33.5	M60x2.5	E - 50



SLOTTED NUTS FOR ERO COLLET CHUCKS

DESIGNATION	A	B	C	SPANNER TO BE USED
UM/ERG75	50	22.5	1 1/2"-12TPI (ACME)	E - 32
	2.0	0.91"		
UM/ERG100	63	28	1 7/8"-12TPI (ACME)	E - 40
	2.48	1.18"		
UM/ERG150	89	40	1 41/64"-12TPI (ACME)	EG - 150
	3.50	1.57"		

NOTE:

1. OPTIONALLY, CLAMPING NUTS ARE ALSO AVAILABLE IN BALANCED CONDITION.
2. (G6.3 @ 12,000 & G 2.5 @ 20,000) FOR HIGH SPEED APPLICATIONS.
3. ON SPECIAL REQUEST, BALANCED COLLET CHUCKS WITH BALANCED NUTS CAN ALSO BE SUPPLIED

ORDERING INSTRUCTION

