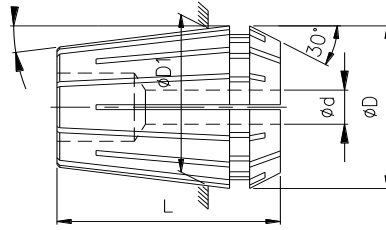


COLLETS ER TYPE

DIN 6499 – FORM B



DIMENSIONS IN mm

DESIGNATION	ø D1	ø D	L	BORE RANGE ø d	IN STEPS OF	COLLET COLLAPSES BY	NO OF PCS/SET
ER8	8.0	8.50	13.80	1.0 to 5.0	0.5	0.5	9
ER11	11.0	11.50	18.00	1.0 to 7.0	0.5	0.5	13
ER12	12.0	12.00	19.50	1.0 to 7.0	0.5	1.0	13
ER16	16.0	17.00	27.50	1.0 to 10.0	1.0	1.0	10
ER20	20.0	21.00	31.50	2.0 to 13.0	1.0	1.0	12
ER25	25.0	26.00	34.00	2.0 to 16.0	1.0	1.0	15
ER32	32.0	33.00	40.00	3.0 to 20.0	1.0	1.0	18
ER40	40.0	41.00	46.00	4.0 to 26.0	1.0	1.0	23
ER50	50.0	52.00	60.00	12.0 to 34.0	2.0	2.0	12

DIMENSIONS IN Inch

ER8	8.0	0.335	0.543	1/16 to 3/16	1/32	1/64	9
ER11	11.0	0.453	0.709	1/16 to 1/4	1/32	1/64	7
ER12	12.0	0.472	0.768	1/16 to 1/4	1/32	1/64	7
ER16	16.0	0.669	1.083	1/16 to 13/32	1/32	1/32	12
ER20	20.0	0.827	1.240	1/16 to 1/2	1/32	1/32	15
ER25	25.0	1.024	1.399	1/16 to 5/8	1/32	1/32	19
ER32	32.0	1.299	1.575	3/32 to 3/4	1/32	1/32	22
ER40	40.0	1.641	1.811	1/8 to 1.0	1/32	1/32	29
ER50	50.0	2.047	2.362	1/2 to 1 3/8	3/32	5/64	21

*ER8, ER12 & ER50 ARE NOT COVERED IN DIN6499

FOR METHOD OF INSERTION AND RUNOUT DETAILS
SEE NEXT PAGE

ORDERING INSTRUCTION

